

FULL KING



Apple cabins  
苹果舱画册

富谦 FULLKING®

工厂介绍  
FACTORY INTRODUCTION



富谦金属Fuqian Metal，总部位于山东省潍坊市临朐县，自2016年成立以来，始终专注于集成房屋、太空舱、苹果舱等多元化装配式建筑领域。公司拥有自有工厂，占地面积约15000平方米，具备月交付200套以上的生产能力。凭借卓越的产品质量和创新的设计方案，富谦金属的产品已远销至韩国、加拿大、新西兰、澳大利亚等多个国家，累计为国内外50余家营地景区提供个性化定制服务，赢得了广泛的国际认可。

作为一家致力于智能装配式建筑的品牌，富谦金属持续加大研发投入，不断优化产品线，以满足文旅地产、核心景区、商业配套、房车营地等多元化市场需求。未来，富谦金属将继续秉承严谨、稳重、理性、官方的经营理念，不断提升自身的综合竞争力，为全球客户提供更加优质的产品和服务。

Fuqian Metal, headquartered in Linqu County, Weifang City, Shandong Province, has been focusing on diversified prefabricated construction fields such as integrated houses, space capsules and apple warehouses since its establishment in 2016. The company has its own factory, covering an area of about 15,000 square meters, with a monthly delivery of more than 200 sets of production capacity. With excellent product quality and innovative design, Fuqian Metal products have been exported to South Korea, Canada, New Zealand, Australia and other countries, a total of more than 50 home and abroad to provide personalized customized services, won a wide range of international recognition.

As a brand committed to intelligent prefabricated buildings, Fuqian Metal continues to increase investment in research and development, and constantly optimize product lines to meet the diversified market needs of cultural tourism real estate, core scenic spots, commercial facilities, RV camps, etc. In the future, Fuqian Metal will continue to adhere to the rigorous, stable, rational and official business philosophy, constantly improve its comprehensive competitiveness, and provide more quality products and services for global customers.



产品领先 服务至上  
Product Leadership Service至上

一个团队 一个人心 一个成就  
One Team One Heart One Achievement

# WORKSHOP DISPLAY

## 车间展示

# 工厂生产车间

## PRODUCTION WORKSHOP



### 氟碳烤漆工艺

FLUOROCARBON PAINT PROCESS



### 龙骨焊接车间

KEEL WELDING WORKSHOP



### 铝板安装车间

ALUMINUM PLATE MOUNTING

**12 AUTOMATED  
PRODUCTION LINES**

现有自动化生产线12条

**12<sup>+</sup>**

**15000 SQUARE  
METERS FACTORY**

自有工厂占地15000平方米

**15000<sup>+</sup>**

**PRODUCE 200+  
UNITS PER MONTH**

每月交付生产200台

**200<sup>+</sup>**

**7 DAYS TO SAMPLE  
20 DAYS DELIVERY**

产品出样7天，交付20天

**7,20<sup>days</sup>**

## 生产优势

PRODUCTION ADVANTAGE



### 严标准 STRICT STANDARD

01

严格把控材质选择、建造工程，各项服务指标都严格遵守行业标准，应急设备齐全、措施完善，让客户更安心、更放心。

Strictly control the selection of materials, construction projects, the service indicators are strictly abide by the industry standards, emergency equipment is complete, perfect measures, so that customers are more at ease, more assured.

### 强质检 STRENGTHEN QUALITY INSPECTION

02

抓质量、强质检，从产品研发到落地，每一步都关注对质量的监控，通过对产品的多项质量检查，树立口碑打好基石。

Attach importance to quality, strengthen quality inspection, from product development to landing, every step is concerned about quality control, through a number of quality inspections of products, establish a good reputation.

### 高技术 HIGH AND NEW TECHNOLOGY

03

公司聚集了产品研发、营地策划咨询、景观规划、工业设计、室内设计、机械加工等各个领域内的高技术人才。

Company has gathered high-tech talents in product research and development, camp planning and consulting, landscape planning, industrial design, interior design, machining and other fields.

# 苹果舱FA-28

富谦® FULL KING®

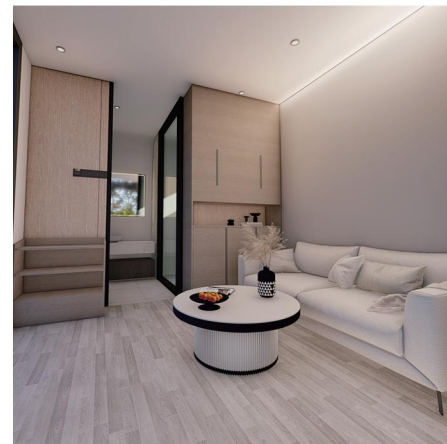
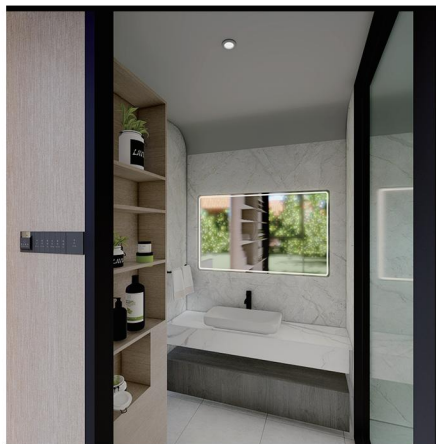
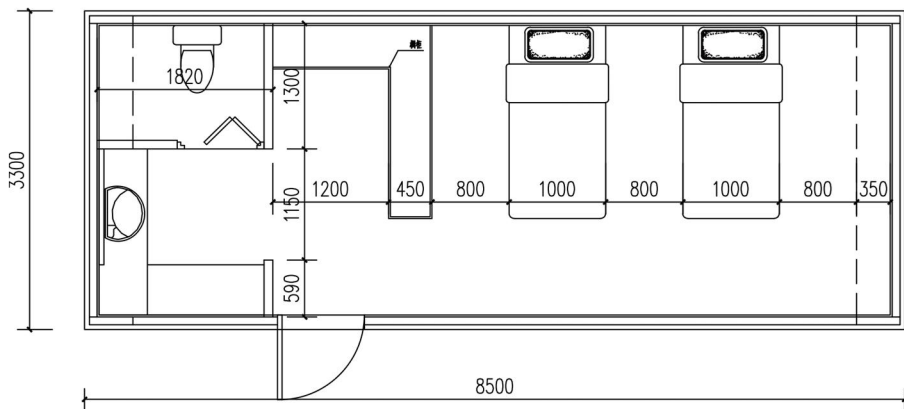
## 室内装修 Interior decoration



产品尺寸 长8.5米\*宽3.3米\*高3.2米

建筑面积 28m<sup>2</sup>

### 室内布局图



整体全镀锌钢架,外壳采用航空铝板, 优雅大气, 可用于多种途径: 民宿、办公、商场等  
The whole galvanized steel frame, the shell is made of aviation aluminum plate elegant atmosphere, can be used in a variety of ways: residential, office shopping malls, etc

# 苹果舱FA-15

富谦® FULL KING®

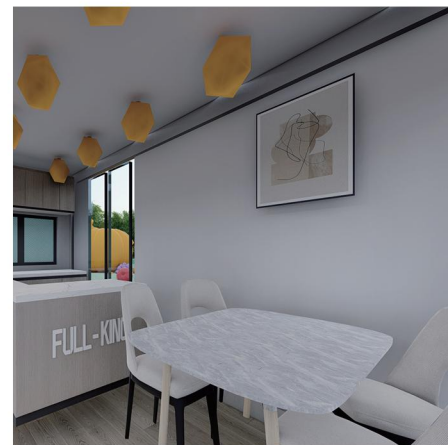
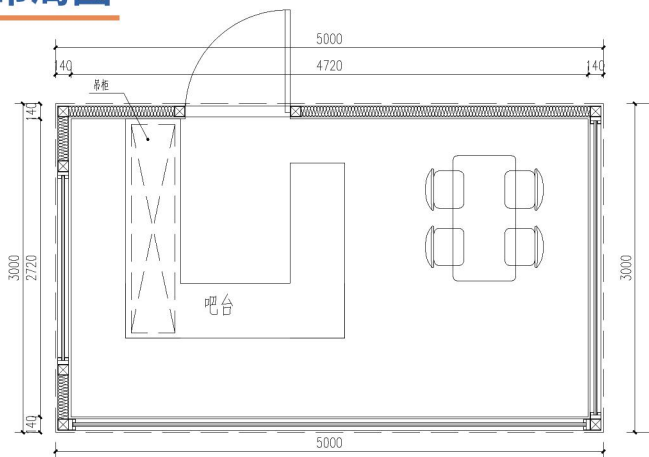
## 室内装修 Interior decoration



产品尺寸 长5.0米\*宽3.0米\*高3.0米

建筑面积 15m<sup>2</sup>

### 室内布局图



整体全镀锌钢架,外壳采用航空铝板, 优雅大气, 可用于多种途径: 民宿、办公、商场等  
The whole galvanized steel frame, the shell is made of aviation aluminum plate elegant atmosphere, can be used in a variety of ways: residential, office shopping malls, etc

# 苹果舱FA-18

富谦® FULL KING®

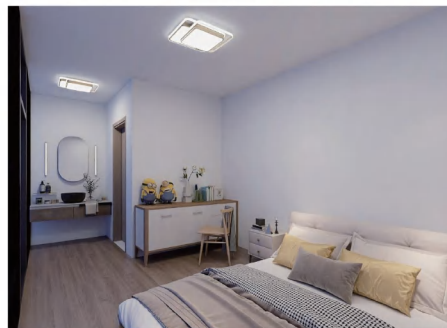
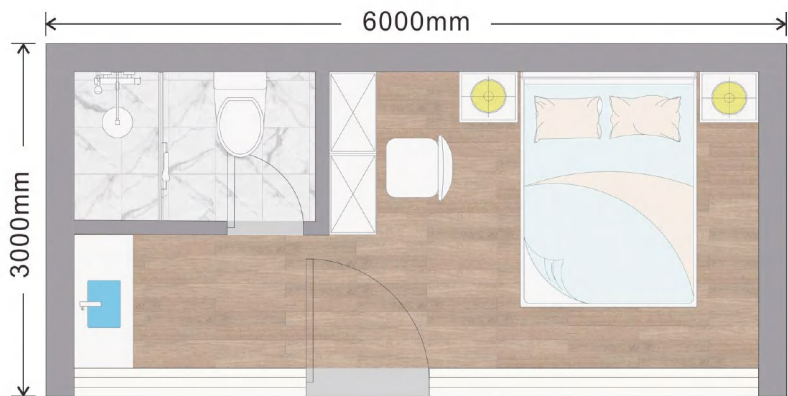
## 室内装修 Interior decoration



产品尺寸 长6.0米\*宽3.0米\*高2.8米

建筑面积 18m<sup>2</sup>

### 室内布局图

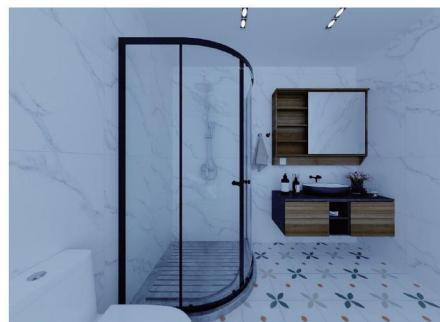
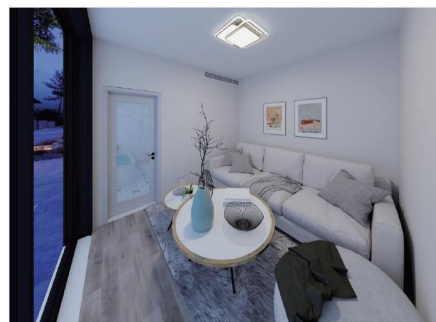




产品尺寸 长9.0米\*宽3.0米\*高2.8米

建筑面积 27m<sup>2</sup>

### 室内布局图



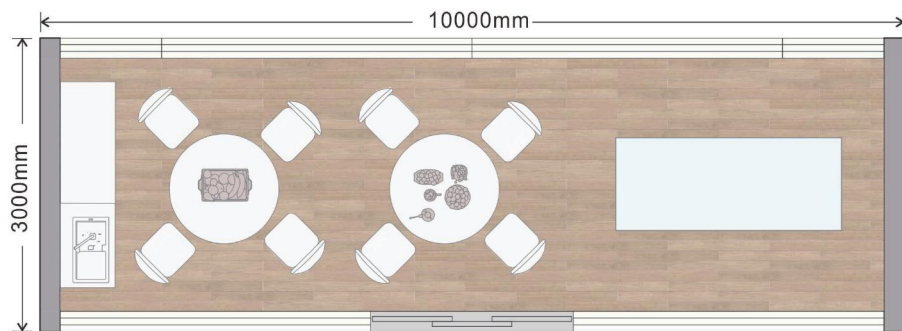
可根据客户不同需求定制内部装修，加装智能化控制系统，实现全屋控制  
Support custom interior decoration, add intelligent control



产品尺寸 长10米\*宽3.0米\*高2.8米 (1层)      建筑面积 30m<sup>2</sup>

产品尺寸 长10米\*宽3.0米\*高2.8米 (2层)      建筑面积 30m<sup>2</sup>

### 室内布局图

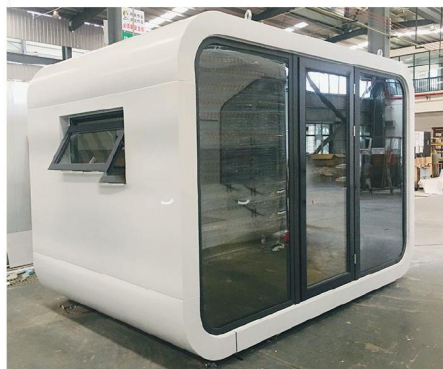


可根据客户不同需求定制内部装修，加装智能化控制系统，实现全屋控制  
Support custom interior decoration, add intelligent control

# 苹果舱FA-06

富谦® FULL KING®

## 室内装修 Interior decoration



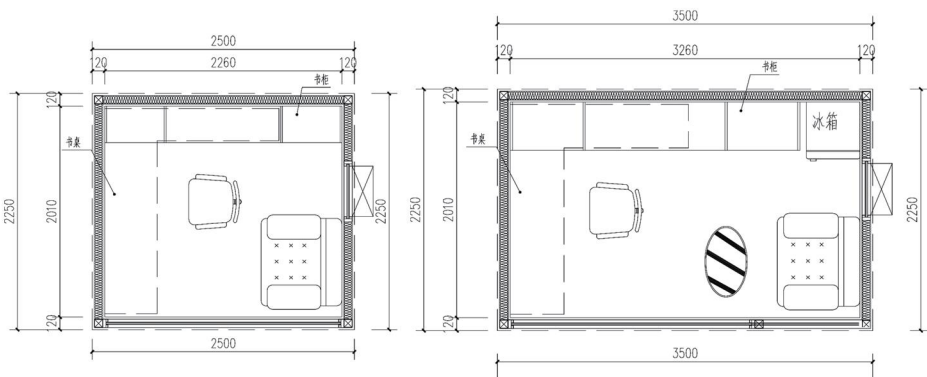
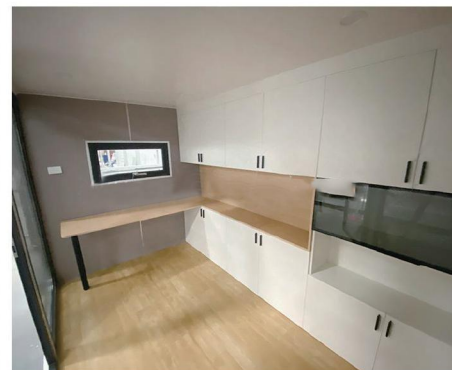
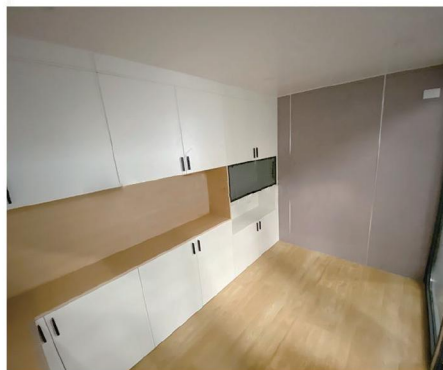
产品尺寸 长2.5米\*宽2.25米\*高2.45米

建筑面积 5.6m<sup>2</sup>

产品尺寸 长3.5米\*宽2.25米\*高2.45米

建筑面积 7.8m<sup>2</sup>

### 室内布局图

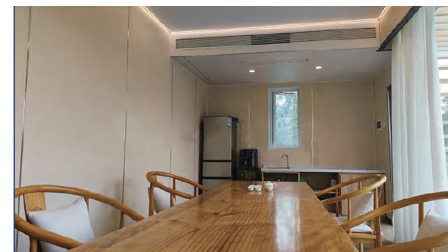
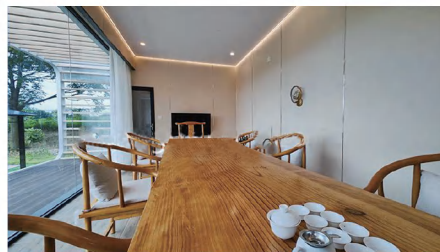
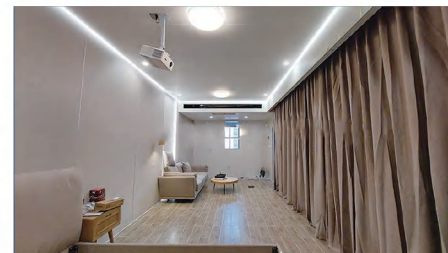
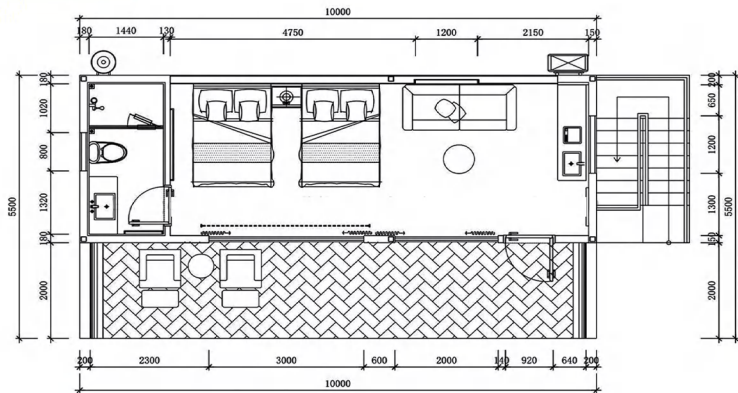


可根据客户不同需求定制内部装修，加装智能化控制系统，实现全屋控制  
Support custom interior decoration, add intelligent control



产品尺寸 长10米\*宽5.5米\*高3.2米(舱体+露台) 建筑面积 55m<sup>2</sup>

### 室内布局图



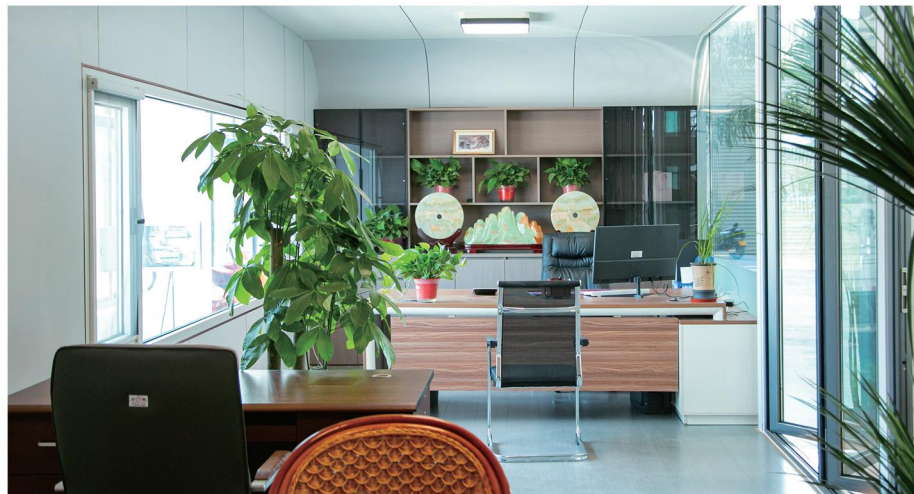
整体全镀锌钢架,外壳采用航空铝板, 优雅大气, 可用于多种途径: 民宿、办公、商场等  
The whole galvanized steel frame, the shell is made of aviation aluminum plate elegant atmosphere, can be used in a variety of ways: residential, office shopping malls, etc

可根据客户不同需求定制内部装修, 加装智能化控制系统, 实现全屋控制  
Support custom interior decoration, add intelligent control

# 苹果舱FA-38

富谦® FULL KING®

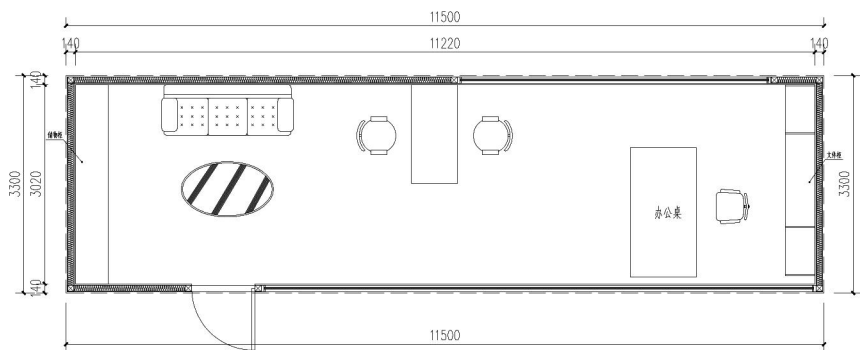
## 室内装修 Interior decoration



产品尺寸 长11.5米\*宽3.3米\*高3.5米

建筑面积 38m<sup>2</sup>

### 室内布局图



# 苹果舱配置表



A:外部防护结构体系	B:室内精装
镀锌钢结构一体框架 (80*80*3.0热镀锌钢管)	室内墙面板及吊顶板 (5mm竹晶板、碳晶板)
氟碳航空铝合金外壳 (2.0mm高温氟碳航空铝板)	环保木地板 (10mm强化实木复合木地板)
保温防水防潮构造体系 (100kg/m³憎水岩棉/聚氨酯发泡)	卫生间隐私玻璃门 (高端极窄门框8mm钢化玻璃)
高端铝合金系统门窗 (70系列系统门窗6mm+12A+6mmLow-e钢化玻璃、德国诺托五金件)	卫生间碳晶板墙面/石塑地面 (8mm竹晶板、碳晶板)
欧松板硅酸钙板 (鲁丽9mm零甲醛OSB、18mm无石棉水泥纤维板)	高端定制洗手盆/镜柜/花洒 (箭牌/九牧)
中空钢化LOWE玻璃 (6mm+12A+6mm)	智能马桶/浴霸/浴缸
全铝平开门	全屋电气线路及照明系统 (公牛)
	全屋给排水系统 (管道、角阀、地漏) (联塑、潜水艇)
	插卡取电/取卡断电面板 (包括铝面板)
C:智能家居	D:家具
米家智能家居系统	卫生间整体橱柜
史密斯/海尔50L电热水器	整体橱柜
美的/海信变频冷暖空调×1套	
智能门锁	
杜亚电动窗帘 (布、电机轨道)	
房间内隔帘	
A: External protection structure system	B: Indoor hardcover
Galvanized steel structure integrated frame (80*80*3.0 hot-dip galvanized steel tube)	Interior wall panels and ceiling panels
Fluorocarbon paint custom aluminum plate (2.0mm high temperature fluorocarbon aviation aluminum plate)	Eco-friendly wood flooring
Thermal insulation, waterproof and moisture-proof structural system	Bathroom privacy glass door
High-performance thermal insulation aluminum door and window system	Bathroom carbon crystal board wall/stone plastic floor
European pine board calcium silicate board	High-end custom wash basin/mirror cabinet/shower
Hollow tempered LOW-E glass (6mm+12A+6mm)	Smart toilet/bath heater
All aluminum flat doors	Whole house electrical wiring and lighting system
	Whole house water supply and drainage system (pipes, angle valves, floor drains) (Liansu, submarines)
	Integrated light control panel and other functions
C: Smart home	D: Furniture
Smart home systems	Nordic style double bed (including mattress)
Smith 50L Electric Water Heater	High-end custom wine cabinet, cabinet
2 air conditioners	Indoor Nordic wind sand hair, coffee table
Smart door locks	
Projectors and screens	
Curtain	

其他产品效果图 /// OTHER PRODUCT RENDERINGS



其他产品效果图 /// OTHER PRODUCT RENDERINGS



其他产品效果图 /// OTHER PRODUCT RENDERINGS



其他产品效果图 /// OTHER PRODUCT RENDERINGS





# 其他产品效果图 /// OTHER PRODUCT RENDERINGS



## 成品发货 /// FINISHED PRODUCT DELIVERY

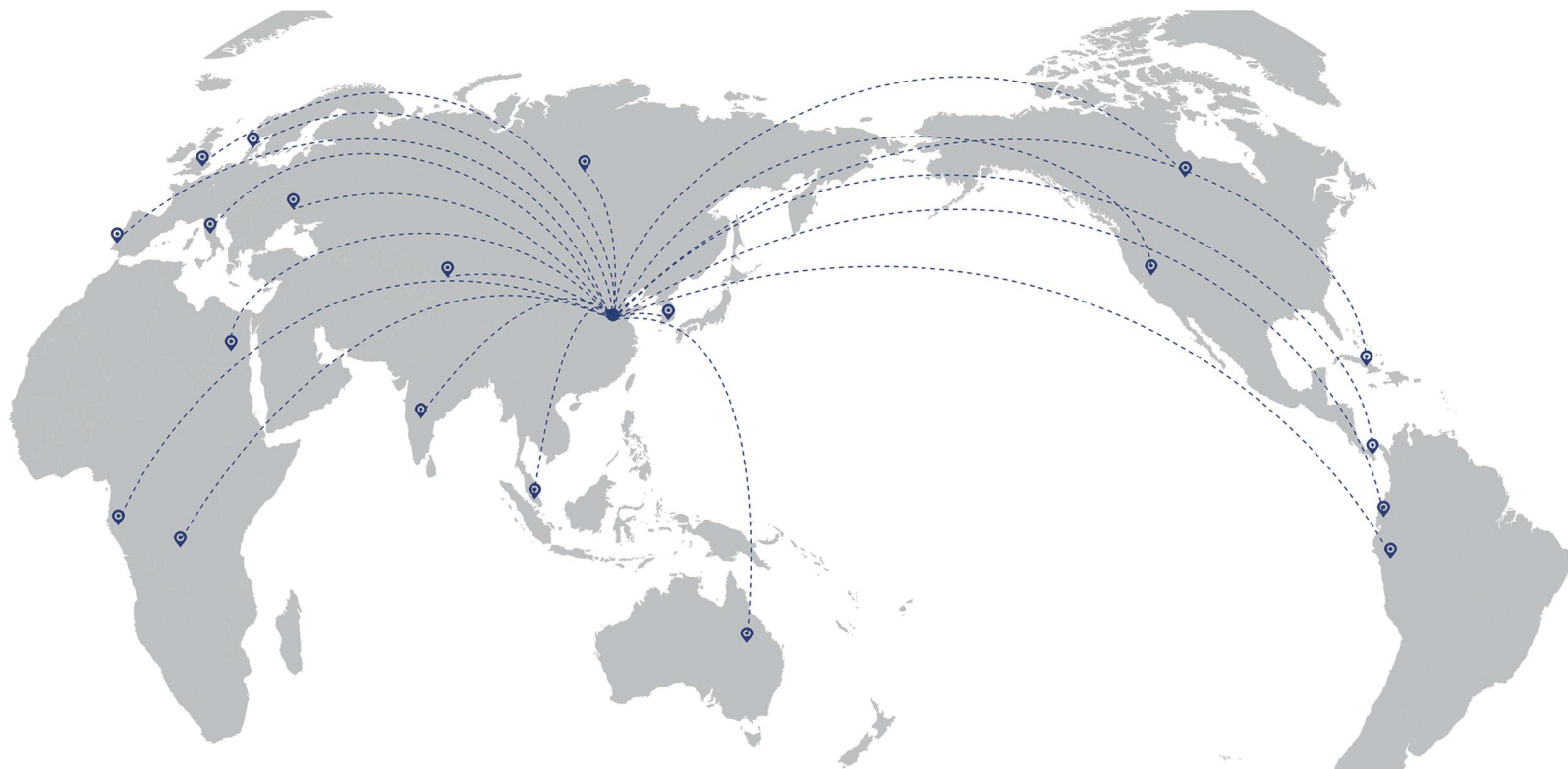


出厂运输:产品外部包装之后,采用大型平板托运车运输。

产品从工厂到营地现场旅途中,将采用严密的安全保护措施保证在运输中安全安稳。

Factory transport: After the external packaging of the product, the use of large flatbed transport vehicles. During the journey from the factory to the camp site, strict safety protection measures will be adopted to ensure the safety and security of the products in transportation.

发货地区 /// DELIVERY AREA 



**SERVED MORE  
THAN 65+ COUNTRIES**

客户遍布65多个国家

**65<sup>+</sup>**

**SERVICE CUSTOMERS  
AS MANY AS 375+**

服务客户多达375家

**375<sup>+</sup>**